

**W  
S** **SLIMLINE STEEL  
WINDOWS & DOORS**

Our steel windows & doors give off the old fashioned heritage look, single or double glazed, open in or out, for internal as well as external usage. We aim to "steel" the show!

[www.polishinterior.com](http://www.polishinterior.com)[office@polishinterior.com](mailto:office@polishinterior.com)

0 20 3575 1351

## Single / Double glazing

### Choice of handles:

standard in RAL colour, Z-shaped, L-shaped welded handles

## Finishes:

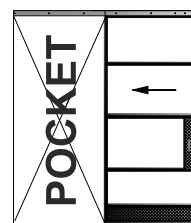
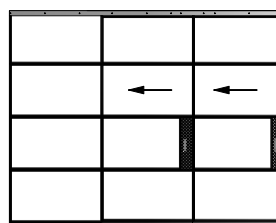
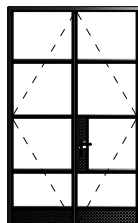
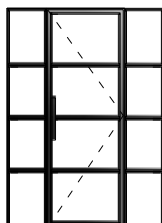
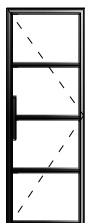
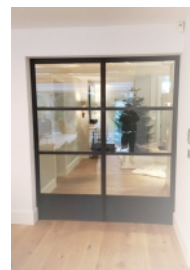
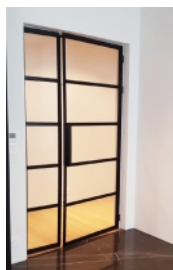
- colour powder coating (RAL, matt), rusted, special gold effect



With 4 profiles to choose from, thermally broken or not, you can't go wrong with our slimline steel windows&doors. Choose from single, double or even triple glazing, open in or out, sliding, bi-fold or even pocket doors.

Possible window opening options are open in or out, with tilt or turn. With optional glazing bars being as small as only 20mm, it gives the old tyle heritage look, while still keeping the modern minimalistic look.

Colour powder coating finishes available in RAL or matt, along with a 'rusted' or special golden effect. Also available in bronze.



- W20 - hot rolled steel

---● W40- hot rolled steel

Jansen - hot-dip  
galvanized steel,  
thermally isolated  
profiles

Jansen - Economy,  
without thermal  
isolation

