



From the  
**Anvil**<sup>®</sup>

# STEEL DOORS AND WINDOWS ACCESSORIES

premium hand made ironmongery



[www.polishinterior.com](http://www.polishinterior.com)



[office@polishinterior.com](mailto:office@polishinterior.com)



0 20 3575 1351





From the  
**Anvil**<sup>®</sup>

## STEEL WINDOWS AND DOORS ACCESSORIES

Combining beauty with durability, expert Blacksmiths hand craft exquisite products by forging mild steel and hot forging brass to make one-of-a-kind ironmongery that will last a lifetime.





# NEWBURY



aged bronze Newbury  
Slimline Lever  
Espagnolette Lock Set ↑



1. Polished Chrome  
Newbury Lever Euro Set  
Product Code: 91424

2. Aged Bronze  
Newbury  
Lever Latch Set  
Product Code: 91436

3. Polished Nickel  
Newbury  
Slimline Lever Espag.  
Lock Set  
Product Code: 91427

4. Polished Nickel  
Newbury  
Lever On Rose Set  
(Beehive)  
Product Code: 46059

5. Aged Brass Newbury  
Lever Lock Set  
Product Code: 91414

6. Polished Chrome  
Newbury Slimline Lever  
Latch Set  
Product Code: 45431

7. Aged Bronze  
Newbury  
Lever On Rose Set  
Product Code: 91439

8. Polished Bronze  
Newbury Lever On Rose  
Set (Plain)  
Product Code: 46065



# BROMPTON

Looking to add a contemporary flair to your home? Our Brompton collection is the perfect choice. With its sleek and symmetrical design, this versatile style can be used throughout your property. In this blog, we'll show you how to style Brompton to create a modern and sophisticated aesthetic.

1. Black Brompton Lever  
On Rose Set (Square)  
Product Code: 45674

2. Aged Bronze Brompton  
Slimline Espag. Lock Set  
Product Code: 45775

3. Aged Brass Brompton  
Slimline Espag. Lock Set  
Product Code: 45499

4. Polished Nickel  
Brompton Lever On Rose  
Set (Plain)  
Product Code: 45667

5. Polished Bronze  
Brompton Lever On Rose  
Set (Art Deco)  
Product Code: 46102

6. Polished Chrome  
Brompton -  
Slimline Espag. Lock Set  
Product Code: 45525

7. Pewter Brompton Lever  
On Rose Set (Beehive)  
Product Code: 45681

8. Matt Black Brompton  
Lever On Rose Set (Art  
Deco)  
Product Code: 45676





# MONKEY TAIL

## door handles examples

1. Pewter Monkeytail  
Slimline Lever Espag.  
Lock Set - RH  
Product Code: 33038R

2. Black Monkeytail Lever  
Euro Lock Set  
Product Code: 45591

3. Pewter Monkeytail Lever  
Bathroom Set  
Product Code: 33617

4. External Beeswax  
Monkeytail Slim. Lever  
Espag. Lock Set - LH  
Product Code: 45594L

5. Beeswax Monkeytail  
Lever Latch Set  
Product Code: 33901

6. Black Monkeytail Lever  
Lock Set  
Product Code: 33279

7. Pewter Monkeytail Lever  
On Rose (Diamond)  
Product Code: 33612



# MONKEY TAIL

window handles examples



PEWTER 16MM  
MONKEYTAIL ESPAG - RH  
PRODUCT CODE: 33713



PEWTER LARGE 16MM  
MONKEYTAIL ESPAG - RH  
PRODUCT CODE: 33345



BEESWAX 10" MONKEYTAIL  
STAY  
PRODUCT CODE: 33143



BLACK 16MM MONKEYTAIL  
ESPAG - RH  
PRODUCT CODE: 33983



BLACK SLIM MONKEYTAIL  
ESPAG - RH  
PRODUCT CODE: 33242



POLISHED BRASS SLIM  
MONKEYTAIL ESPAG - LH  
PRODUCT CODE: 33310

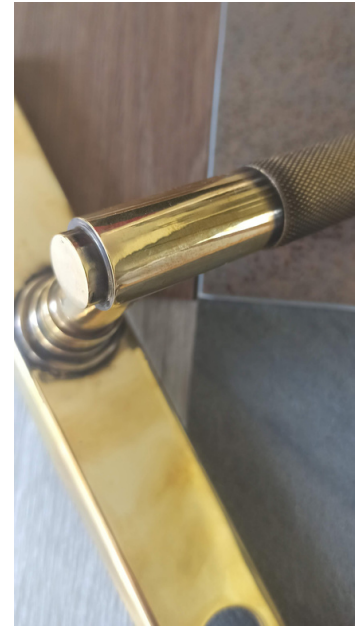




# FINISHES EXAMPLES



AGED BRASS



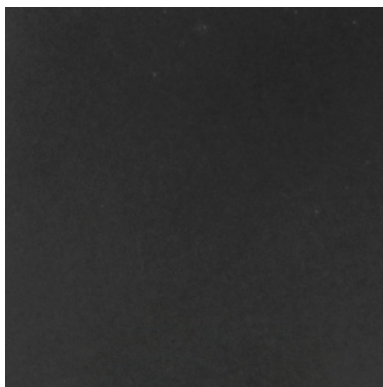
aged brass **Brompton** Slimline Lever Espagnolette Lock Set



PEWTER



pewter 16mm **Monkey Tail** window handle



AGED BRONZE



aged bronze **Newbury** Slimline Lever Espagnolette Lock Set



# From the Anvil®

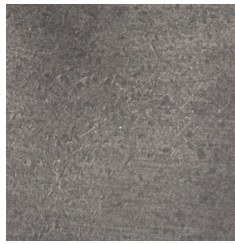
# ACCESSORIES FINISHES



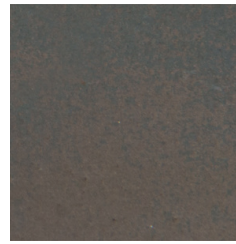
AGED BRASS



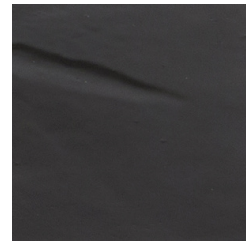
AGED BRONZE



ANTIQUÉ PEWTER



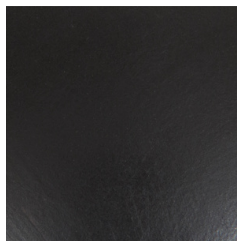
BEESWAX



BLACK



BRUSHED STAINLESS STEEL



EBONY



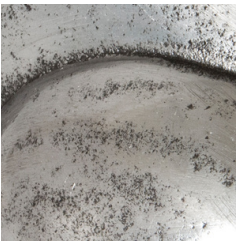
ETERNAL BEESWAX



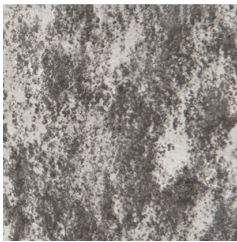
IRON



LAQUERED BRASS



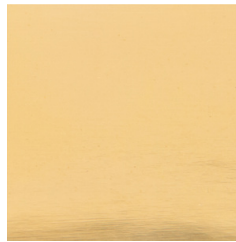
NATURAL SMOOTH



NATURAL TEXTURED



PEWTER



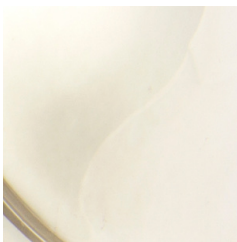
POLISHED BRASS



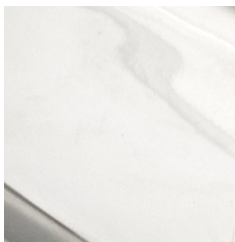
POLISHED BRONZE



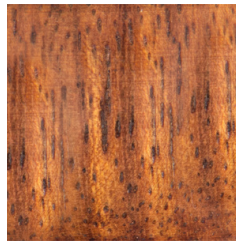
POLISHED CHROME



POLISHED NICKEL



POLISHED STAINLESS STEEL



ROSEWOOD



SATIN CHROME







## CARE & MAINTENANCE

**Our wide array of finishes have been meticulously refined and perfected over the years to provide unrivalled strength and durability. All our products are crafted by hand with high-quality finishes that can last a lifetime if properly cared for.**

### **General Maintenance & Warnings**

Our products offer excellent anti-corrosive properties and will last a lifetime if properly maintained. To help you care for your chosen finish, we've created a comprehensive care guide specifically for each one of our finishes!

We recommend avoiding the use of our ironmongery externally in coastal areas due to the high levels of atmospheric salt which will rust or tarnish most of our finishes. The only finishes suitable for use in these environments are our stainless steel products.

**Please ensure any newly plastered or painted rooms are fully cured before fitting your ironmongery, as moisture may tarnish or rust some finishes.**

When decorating, we recommend removing ironmongery prior to painting, staining, or plastering, and only returning fittings once the area has been fully cured. Please avoid using any form of chemical cleaner, e.g. oxalic acid or aerosol sprays to clean products as these can permanently damage the finish.



For more information on certain finishes' maintenance - email us.



## FIXING SCREWS

The fixings supplied with our products are hand-made from mild stainless steel. Due to the hand-made nature of our fixings, a little extra care needs to be taken when fitting.

It's always recommended that a pilot hole is drilled (especially into hard woods) for all our fixings. Ideally, it's suggested that screws are rubbed with candlewax before fitting to ease the application. Please take the utmost care when fixing our screws, as many of our products are supplied with traditionally slotted screws.

We recommend that, as well as drilling a pilot hole, a well-fitting screwdriver should be used. Please avoid fixing with an impact driver or drill operated screwdriver due to the hand-made nature of the fixings.

All our screws can be purchased in quantities of 25 to replace lost or damaged screws - please see our 'Accessories' section for further details. A number of our screws are also available in raised-head and countersunk stainless steel if preferred.

