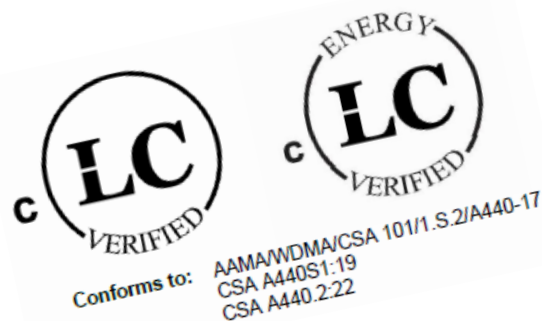


AW104TT Dual Action Window CW-PG45 class

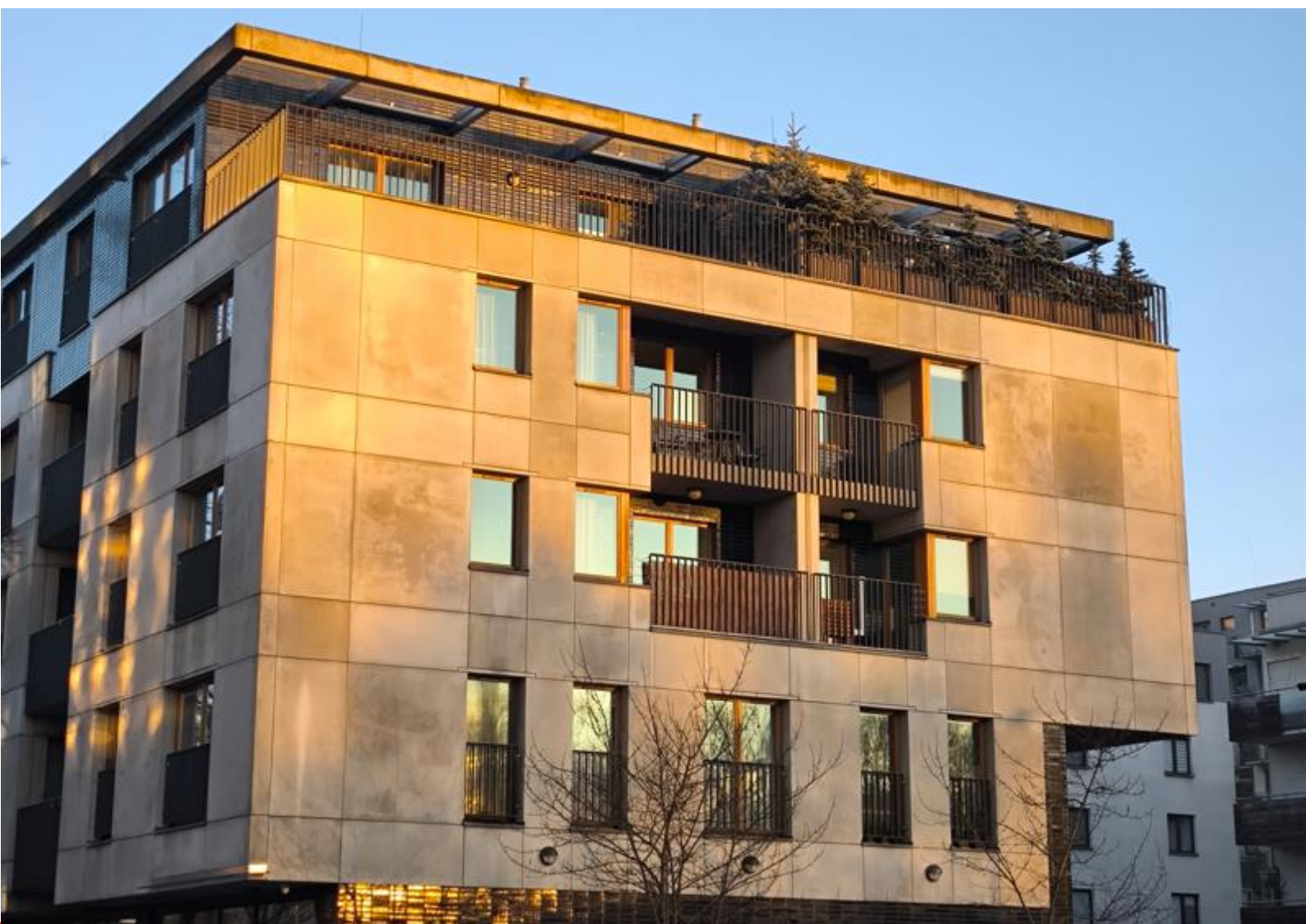


Certified according to:

AAMA/WDMA/CSA 101/1.S.2/A440-17

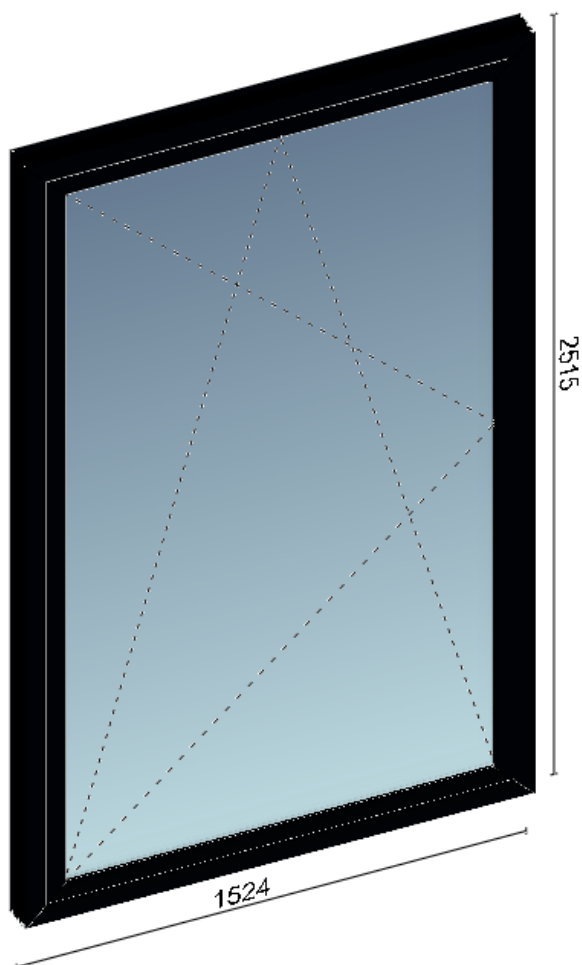
CSA A440.2:22

CSA A440S1:19



AW104TT Dual Action Window

Max size 1524x2515mm [5 Feet x 8 feet 3 ¹/₆₄ inches]



AW104TT Dual Action Window

Triple pane TEMPERED

aluminum



AW104TT Dual Action Window

Energy Performance PG45, class CW

Polishinterior S.C. Address: Nad Drwina 10 hala D9, 30-741 Krakow, Poland Email: maciek@polishinterior.com Tel: + 48 502 24 88 94							
Energy Performance Results for AW104TT Dual Action Window – Series AW104 Aluminum frame; Triple glazed system; ClimaGuard Premium2 on 4mm Float Extra Clear, as per option stated below; Argon 90% gap filled; Spacer: Multitech G ALU PRO Warm Edge Spacer							
No. of glazing layers	Glazing option no.	Glass surface emissivity with Low-E coating	Tint description	Glass type(s)	Spacer type(s)	Gap fill(s)	Gap width(s)
3	2*	ClimaGuard Premium2 on 4mm Extra Clear (Surface $\epsilon = 0.039$)	Clear	4mm Float Extra Clear	Multitech G ALU PRO Warm Edge Spacer	Argon 90%	18 mm
ENERGY PERFORMANCE RATINGS							
U-factor [BTU/h-ft²-°F]		SOLAR HEAT GAIN COEFFICIENT		Visible Transmittance			
0.166		0.341		0.490			
Air Leakage [L/s · m²]				Energy Rating			
0.0				39			

Thermal performance and visual transmittance ratings certified to CSA A440.2:22 & NFRC 100-2020. Ratings are determined for fixed set of environmental conditions and a specific product. LabTest Certification Inc. agency does not recommend or warrant product for any specific use.

Les taux de performance thermique et de transmission visuelle certifiées selon la norme CSA A440.2:22 & NFRC 100-2020. L'évaluation est déterminée pour un ensemble fixe de conditions environnementales et un produit spécifique. LabTest Certification Inc. ne recommande pas et ne recommande aucun produit pour une utilisation particulière.

NOTES:

*Represents the Glazing Option according to Listing Report (can be only 1 - 5 at time of this report).



 Evaluated to/Évalué pour: CSA 101/1. S.2/A440-17	Manufacturer: Polishinterior S.C. Address: Nad Drwina 10 hala D9, 30-741 Krakow, Poland Email: maciek@polishinterior.com Tel: + 48 502 24 88 94 Model No: PI-AW104TT-IGXX Dual Action Window Class CW – PG45: Size tested: 1525 x 2414 mm (60.0 x 95.0 in) – Type DAW Positive/ Negative ASD Design Pressure (DP) = 2160 Pa Water Penetration Resistance Test Pressure = 430 Pa Canadian Air Infiltration/ Exfiltration = A3 Level
--	---