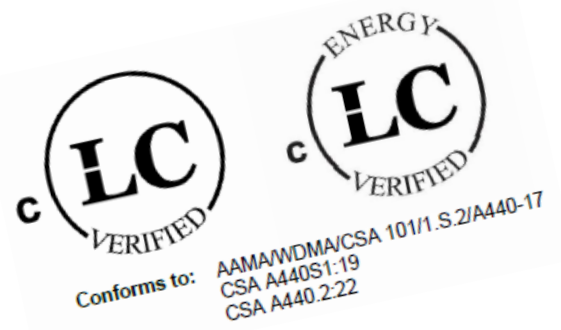


# CW50 Fixed Window . CW-PG 45 class



Certified according to:

AAMA/WDMA/CSA 101/1.S.2/A440-17

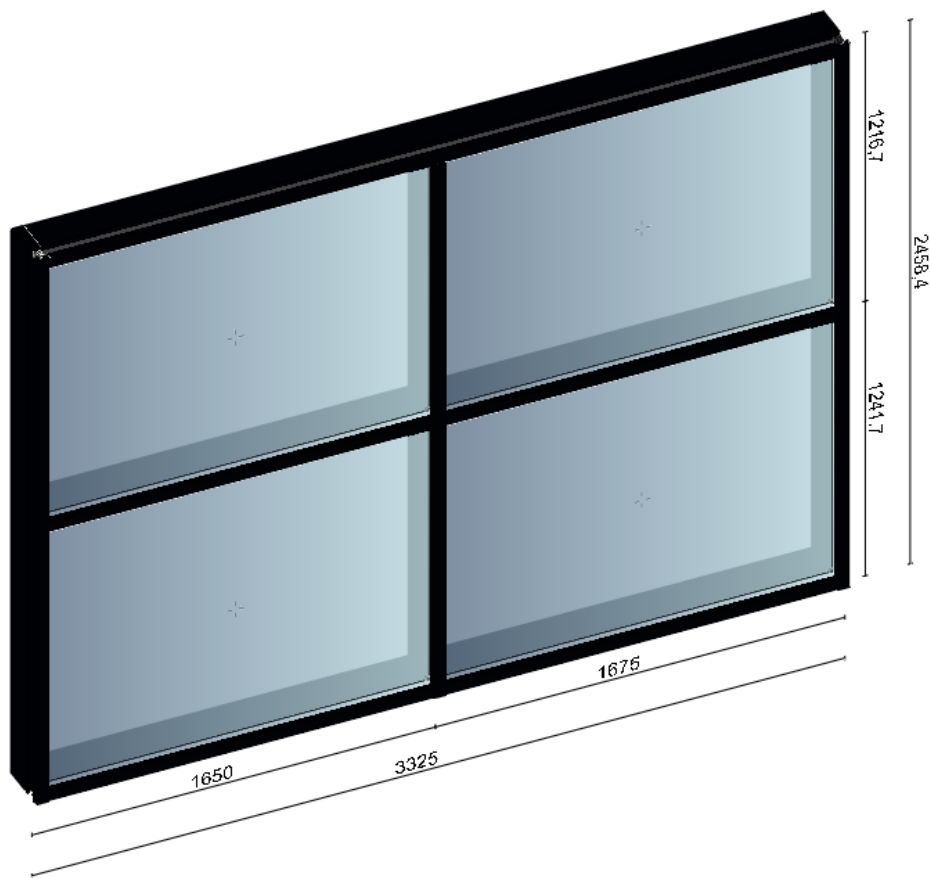
CSA A440.2:22

CSA A440S1:19



# CW50 Fixed Window

Max size 3325x2458mm [10 feet 10 <sup>29</sup>/<sub>32</sub> inches x 8 feet <sup>49</sup>/<sub>64</sub> inch]



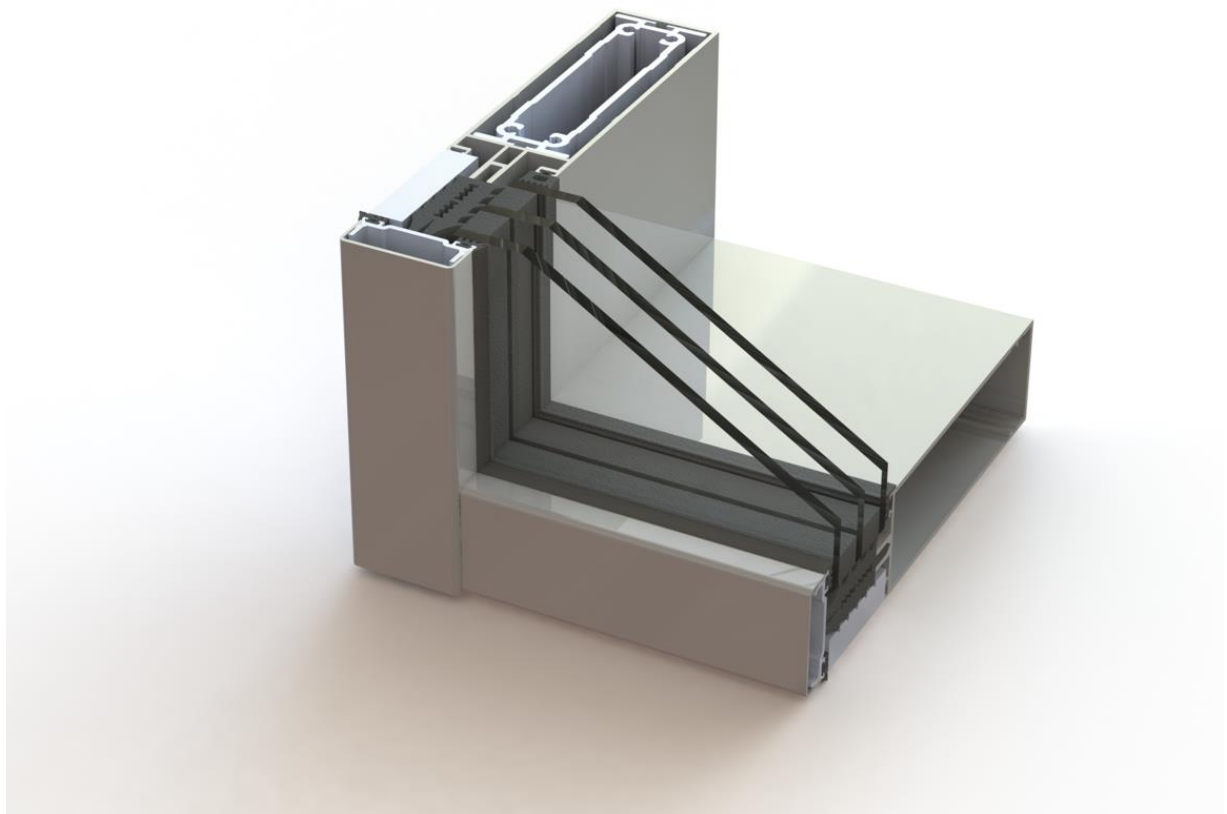
---

# CW50 Fixed Window

Triple pane

TEMPERED

aluminum



# CW50 Fixed Window

## Energy Performance PG45, class CW

<b>Polishinterior S.C.</b> Address: Nad Drwina 10 hala D9, 30-741 Krakow, Poland Email: <a href="mailto:maciek@polishinterior.com">maciek@polishinterior.com</a> Tel: + 48 502 24 88 94							
<b>Energy Performance Results for CW50 Fixed Window</b>  Aluminum frame; Triple glazed system; ClimaGuard Premium2 on 6mm Float Extra Clear, as per option stated below; Argon 90% gap filled; Spacer: Multitech G ALU PRO Warm Edge Spacer							
No. of glazing layers	Glazing option no.	Glass surface emissivity with Low-E coating	Tint description	Glass type(s)	Spacer type(s)	Gap fill(s)	Gap width(s)
3	3*	ClimaGuard Premium2 on 6mm Extra Clear (Surface $\epsilon = 0.039$ )	Clear	6mm Float Extra Clear	Multitech G ALU PRO Warm Edge Spacer	Argon 90%	16 mm
<b>ENERGY PERFORMANCE RATINGS</b>							
<b>U-factor</b> [BTU/h-ft <sup>2</sup> -°F]		<b>SOLAR HEAT GAIN</b> <b>COEFFICIENT</b>		<b>Visible Transmittance</b>			
<b>0.195</b>		<b>0.42</b>		<b>0.61</b>			
<b>Air Leakage [L/s · m<sup>2</sup>]</b>				<b>Energy Rating</b>			
<b>0.0</b>				<b>40</b>			

Thermal performance and visual transmittance ratings certified to CSA A440.2:22 & NFRC 100-2020. Ratings are determined for fixed set of environmental conditions and a specific product. LabTest Certification Inc. agency does not recommend or warrant product for any specific use.  
 Les taux de performance thermique et de transmission visuelle certifiées selon la norme CSA A440.2:22 & NFRC 100-2020. L'évaluation est déterminée pour un ensemble fixe de conditions environnementales et un produit spécifique.  
 LabTest Certification Inc. ne recommande pas et ne recommande aucun produit pour une utilisation particulière.

**NOTES:**

\*Represents the Glazing Option according to Listing Report (can be only 1 - 5 at time of this report).



 Evaluated to/Évalué pour: CSA 101/1.S.2/A440-17 CSA A440.2:22	<b>Manufacturer: Polishinterior S.C.</b>  <b>Model No: PI-CW50-IGXX</b> <b>Fixed Window</b> Class CW – PG45 – Size tested: 3350 x 2485mm (131.9 x 97.8 in)– Type FW Positive/ Negative ASD Design Pressure (DP) = 2160 Pa Water Penetration Resistance Test Pressure = 430 Pa Canadian Air Infiltration/ Exfiltration = Fixed Level
--	--