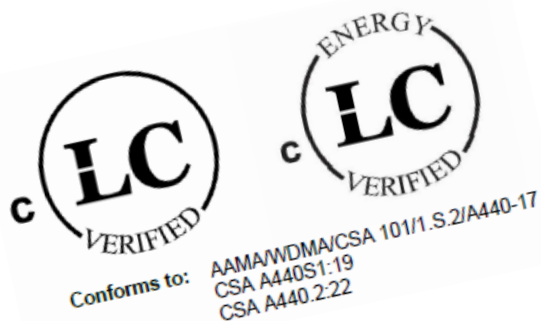


# LS77HI Dual Sliding Door . CW PG35 class



Certified according to:

AAMA/WDMA/CSA 101/1.S.2/A440-17

CSA A440.2:22

CSA A440S1:19



[www.polishinterior.com](http://www.polishinterior.com)

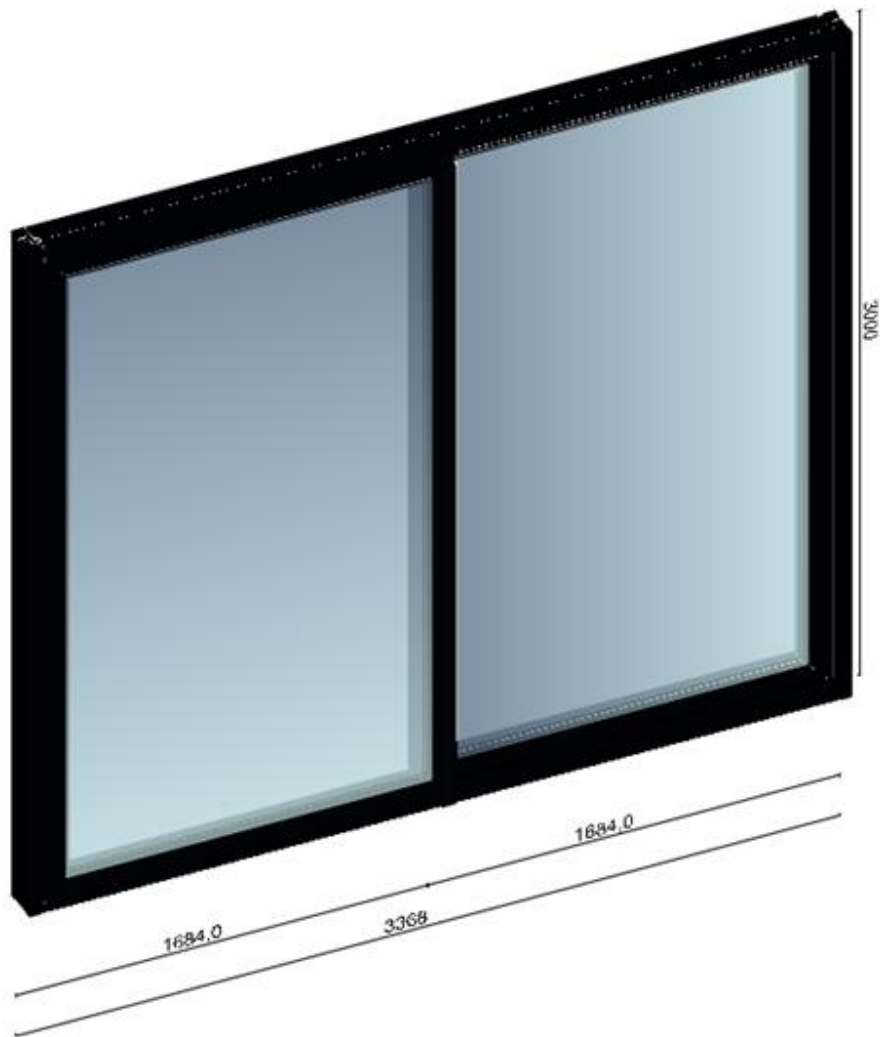
 **POLISH  
INTERIOR**

---

# LS77HI Dual Sliding Door

Max size 3368x3000 mm

[11 feet  $\frac{19}{32}$  inch x 9 feet  $\frac{7}{64}$  in]

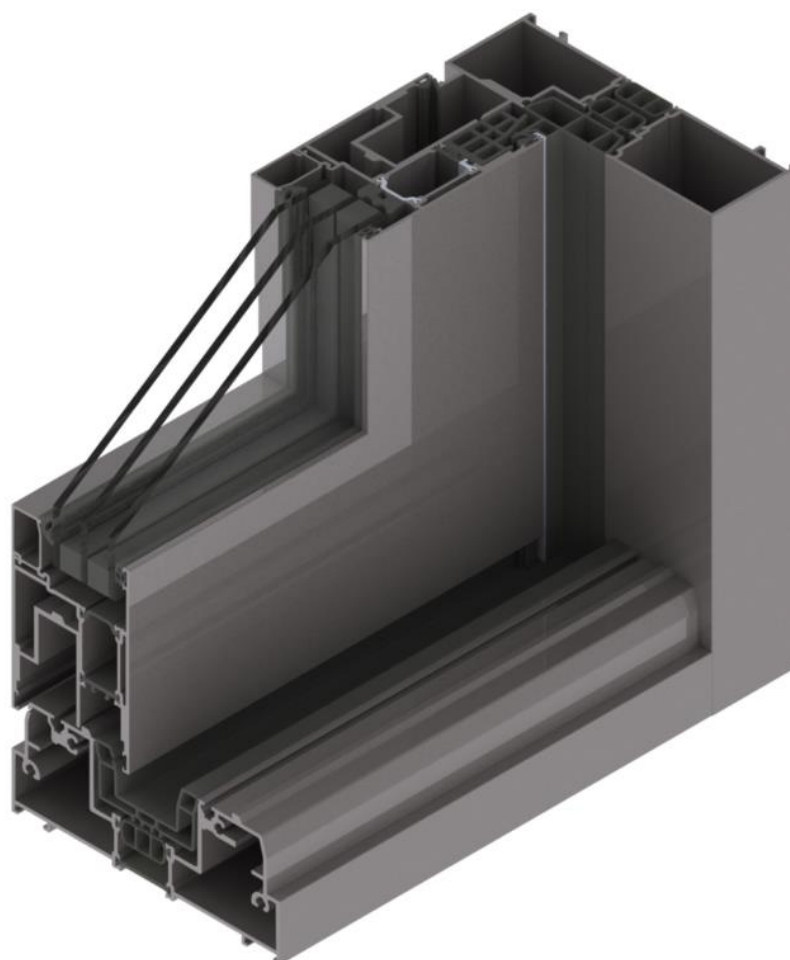


---

# LS77HI Dual Sliding Door

Triple pane TEMPERED

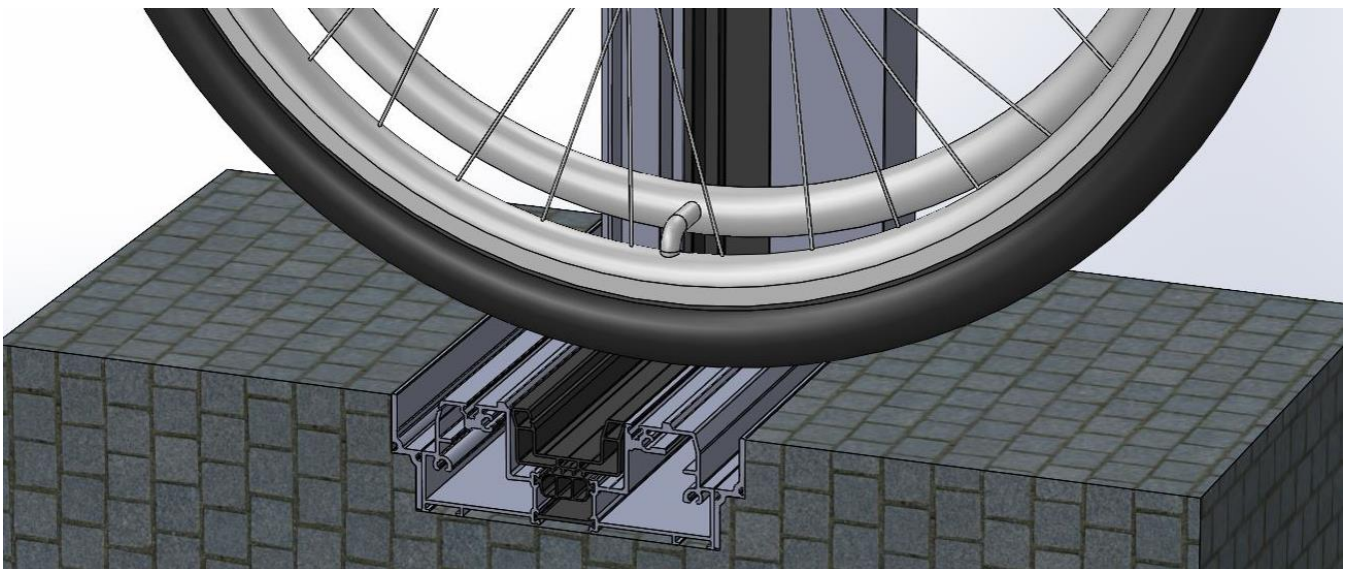
aluminum



---

# LS77HI Dual Sliding Door

## Lowered threshold



# LS77HI Dual Sliding Door

## Energy Performance PG30, class CW

<b>Polishinterior S.C.</b> Address: Nad Drwina 10 hala D9, 30-741 Krakow, Poland Email: <a href="mailto:maciek@polishinterior.com">maciek@polishinterior.com</a> Tel: + 48 502 24 88 94							
<b>Energy Performance Results for LS77HI Sliding Door – Series LS77HI</b>  Aluminum frame; Double glazed system; ClimaGuard Premium2 on 6mm Float Extra Clear, as per option stated below; Argon 90% gap filled; Spacer: Multitech G ALU PRO Warm Edge Spacer							
No. of glazing layers	Glazing option no.	Glass surface emissivity with Low-E coating	Tint description	Glass type(s)	Spacer type(s)	Gap fill(s)	Gap width(s)
3	2*	ClimaGuard Premium2 on 4mm Extra Clear (Surface $\epsilon = 0.039$ )	Clear	4mm Float Extra Clear	Multitech G ALU PRO Warm Edge Spacer	Argon 90%	18 mm
<b>ENERGY PERFORMANCE RATINGS</b>							
U-factor [BTU/h-ft <sup>2</sup> ·°F]		SOLAR HEAT GAIN COEFFICIENT		Visible Transmittance			
<b>0.282</b>		<b>0.478</b>		<b>0.476</b>			
Air Leakage [L/s · m <sup>2</sup> ]				Energy Rating			
<b>0.4</b>				<b>32</b>			

Thermal performance and visual transmittance ratings certified to CSA A440.2:22 & NFRC 100-2020. Ratings are determined for fixed set of environmental conditions and a specific product. LabTest Certification Inc. agency does not recommend or warrant product for any specific use.

Les taux de performance thermique et de transmission visuelle certifiées selon la norme CSA A440.2:22 & NFRC 100-2020. L'évaluation est déterminée pour un ensemble fixe de conditions environnementales et un produit spécifique. LabTest Certification Inc. ne recommande pas et ne recommande aucun produit pour une utilisation particulière.

**NOTES:**

\*Represents the Glazing Option according to Listing Report (can be only 1 - 5 at time of this report).



 Evaluated to/Évalué pour: CSA 101/1.S.2/A440-17	<b>Manufacturer: Polishinterior S.C.</b> Address: Nad Drwina 10 hala D9, 30-741 Krakow, Poland Email: <a href="mailto:maciek@polishinterior.com">maciek@polishinterior.com</a> Tel: + 48 502 24 88 94  <b>Model No: PI-LS77HI-IGXX</b> <b>Sliding Door</b> Class CW – PG35 – Size tested: 3368 x 3000 mm (132.6 x 118.1 in) – Type SD-DD Positive/ Negative ASD Design Pressure (DP) = 1680 Pa Water Penetration Resistance Test Pressure = 260 Pa Canadian Air Infiltration/ Exfiltration = A3 Level
---	---